

STRAPBINDER®



BATTERY POWERED TENSIONING TOOL

1 TOOL
3 APPLICATIONS

1



Clamping tool for J-Series clamps.
Can be bench mounted for
production assemblies.

2



Center Punch tensioning tool for
stainless steel and galvanized
clamps.

3



Band & Buckle tensioning tool
for large diameter hose, sign
securement and bundling
applications.

PROVEN DESIGNS, BILLIONS OF TIMES

STRAPBINDER.COM

BATTERY-POWERED TOOL

Features

Benefits

<ul style="list-style-type: none">• Portable or bench mountable	<ul style="list-style-type: none">• Provides the versatility needed for any job. It can be used on a bench and removed quickly for point-of-use applications. It is actually two tools in one!
<ul style="list-style-type: none">• Unlimited band take-up, no refeeding	<ul style="list-style-type: none">• Reduce cycle time; no need to reload the tool to accommodate smaller diameter hoses.• Higher production rates; increased throughput
<ul style="list-style-type: none">• Ergonomic grip design and weight balance• Lightweight at 9.0 pounds (with battery)	<ul style="list-style-type: none">• Reduce operator fatigue• Extremely easy to use• Ideal for field use
<ul style="list-style-type: none">• 18 volt Lithium-Ion battery technology	<ul style="list-style-type: none">• Long battery life to handle large jobs; easily rechargeable• Maximum portability! No cords required• Approximately 125 clamps per charge• 30 minute charge time, 80% charged at 15 minutes
<ul style="list-style-type: none">• Tool works with most brands of pre-formed hose clamps	<ul style="list-style-type: none">• Reduce inventory levels and inventory carrying costs; no need to stock proprietary hose clamping systems
<ul style="list-style-type: none">• Single touch operation	<ul style="list-style-type: none">• Makes tensioning clamps very easy• No need to press and hold• Also available with foot pedal option
<ul style="list-style-type: none">• Versatile clamp selection	<ul style="list-style-type: none">• 1 tool – 3 functions: – J-Series 5/8" and 3/4" – Center Punch 5/8" – Band & Buckle 5/8", 1/2" and 3/4"
<ul style="list-style-type: none">• No additional tools required for J-Series	<ul style="list-style-type: none">• Tool tensions, cuts and seals the J-Series clamp; no hammer required
<ul style="list-style-type: none">• Durable• Heavy-duty construction	<ul style="list-style-type: none">• Designed for the industrial hose assembler• Tool will withstand harsh environments
<ul style="list-style-type: none">• Safety features	<ul style="list-style-type: none">• Illuminates red while tool is tensioning• Press and hold for reverse function



Part #800500

Battery Powered Clamping Tool

Battery Powered Clamping Tool for stainless and galvanized 5/8" and 3/4" J-Series clamps. Tensions, locks and cuts the strap. Unlimited take up, no refeeding. Approximately 125 clamps per charge.



Part #800505

Battery Powered Bench Mounted System

Battery powered clamping tool with foot pedal and bench mount fixture for J-Series clamps. Dual use versatility. Portable for field repairs but also bench mountable for in-house production assemblies.



Part #800800

Battery Powered Center Punch Tensioning Tool

Battery Powered Center Punch Tensioning tool for 5/8 stainless steel and galvanized clamps. Single touch operation. Preset tension settings yield constant tension on each clamp applied.

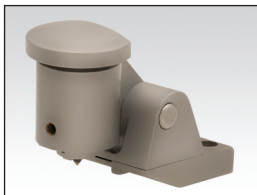


Part #800805

Battery Powered Band and Buckle Tensioning Tool

Consistent tensioning of 1/2" - 5/8" and 3/4" stainless strapping. Excellent option for large diameter hose, sign securement and bundling applications. Use with ear style buckles or wing seals.

ACCESSORIES



Part #800638

Center Punch Attachment

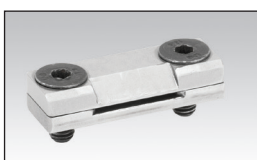
Center Punch Attachment easily attaches to the tool for the application of center punch clamps. Will accept most brands of 5/8" stainless and galvanized clamps.



Part #800637

Band and Buckle Attachment

Band and Buckle Attachment easily attaches to the tool for use with band and buckle.



Part #800802

J-Series Attachment

J-Series Attachment easily attaches to the tool for the application of stainless and galvanized J-Series clamps.

BATTERY POWERED TENSIONING TOOL

*For Clamp and
Sign Securement*



FEATURES

- Portable and bench mountable
- Battery operated
- Unlimited take-up, no refeeding
- Operates with any brand of clamps
- Single touch one-button control
- Fully charged in 30 minutes
- Lightweight and durable
- Easy to use

Strapbinder's battery powered tool tensions, locks and cuts the strap, eliminating the need for multiple tools, saving you time and money. Its versatile design can be used for J-Series, center punch and band and buckle applications.

ALSO AVAILABLE



Part #800521
Spare Battery and Charger

Part #800293: Battery only
Part #800294: Charger only



Part #800506
Bench Mount Fixture



Part #800489
Foot Pedal



PLEASE RECYCLE

IDEALTRIDON.COM | PROVEN DESIGNS, BILLIONS OF TIMES

GLOBAL HEADQUARTERS

8100 TRIDON DRIVE SMYRNA, TN 37167 USA | 800.251.3220 | 615.459.5800

USA | MEXICO | CHINA | JAPAN | POLAND | INDIA

© 2017 Ideal Clamp Products, Inc. — JANUARY 2022